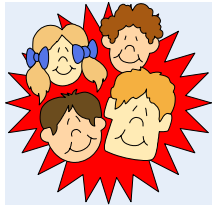




BEHAVIOUR IMPROVEMENT PROGRAMME

BIP works within the Extended Schools Model - based at Churchill Community College and Norham Community Technology College. This programme continues to build on the work begun last year in providing community based facilities and activities to reduce inequalities, narrow the attainment gap and tackle under achievement.



The Behaviour Improvement Programme is a three year project aimed at improving children's ability to learn and succeed. To remove barriers to their learning through effective early intervention and tackling the causes of social exclusion.

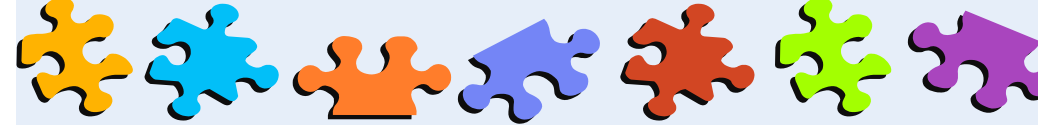
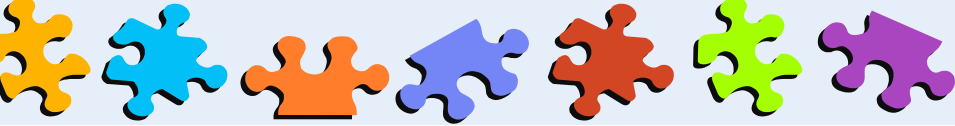
North Tyneside was selected in April 2003 to join 27 other authorities to become part of second round of the Behaviour Improvement Programme.

For the next three years the Norham, Churchill, Longbenton and George Stephenson families of schools will be working in partnership to deliver the programme. The aim of which, is to meet the needs of schools where behaviour and attendance are barriers to learning, targeting resources where they are needed most.

If you have any questions please contact Julia Craddock BIP Manager on 200 1521.
Or the 'BIP' lead in the Family of Schools

- Norham Community Technology College James Crinson
- Churchill Community College Alan strachan
- Longbenton/George Stephenson high School Jim Cockburn, Iain Shaw





There are three main strands to BIP

- Behaviour Education Support Teams, multi-agency teams supporting Children and Young People, their Families School Staff and communities.
- First Day Response - Providing full time education and support for excluded pupils both primary and secondary.
- Lead Behaviour Professionals auditing behaviour management needs and working with LEA staff to support Behaviour Management Training for all staff.

Who is involved:

Churchill Family of School

- Battle Hill Primary
- Denbigh Primary
- Stephenson Memorial Primary

Norham Family of Schools

- Riverside Primary
- Waterville Primary
- Percy Main Primary
- Collingwood Primary
- New York Primary

George Stephenson Family of Schools

- Shiremoor Primary
- Backworth Park Primary
- Moor Edge Primary

Longbenton Family of Schools

- Balliol Primary
- Goathland Primary
- Ivy Road Primary
- St Stephen's Primary

The BEST Teams will be set up from a range of staff from a number of different agencies:

- Community Psychiatric Nurses
- Public Health Nurses
- Education Welfare Officer
- Family Support Workers
- Educational Psychologists

Who are helping BIP Schools?

Claire Dawson
Helen Watson

North Tyneside Primary Care Trust
Children's Services North Tyneside Council

Alyson Raine

Northumbria Healthcare Trust, Child and Adolescent Mental Health Service

Jonathan Caswell
Hazel Brown

Educational Psychology Service
Behaviour and Attendance Support Service

Joyce McCarty

PSHCE Team and Healthy Schools, Education Service

Lesley Young-Murphy

Public Health Nurse (Children and Young People)

Inspector Jonathan Trafford
Northumbria Police

Lead Behaviour Professionals are in place in all schools. Behaviour and Attendance audits are being carried out in all BIP schools. Primary Schools are piloting DfES Social, Emotional and Behaviour Skills Training Programmes of Study and Resources.

This is a whole school initiative working to improve the life chances of the whole child.

There are benefits for us all in this work, some may have immediate impact, while other aspects may take a little longer.